

# PETROLYMPIC

**PETROLYMPIC Ltd.** is a Junior Canadian mining company actively exploring in Quebec and Ontario, Canada. The Company is presently focused on its LITHIUM ASSETS in JAMES BAY and ABITIBI, as well as its GOLD ASSETS in the VAL D'OR region. The company currently holds over 19,500 ha (over 48,000 acres) of high potential properties.

**We focus on favourable geology, systematic exploration, accessible infrastructure and experienced management.**



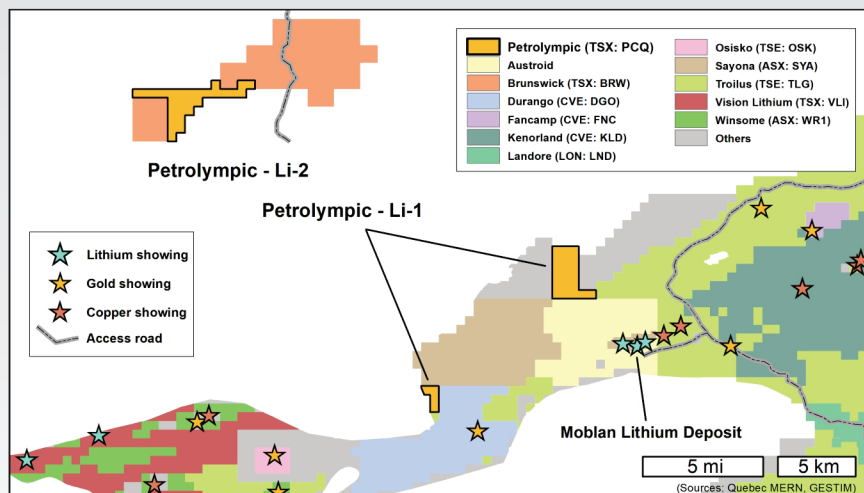
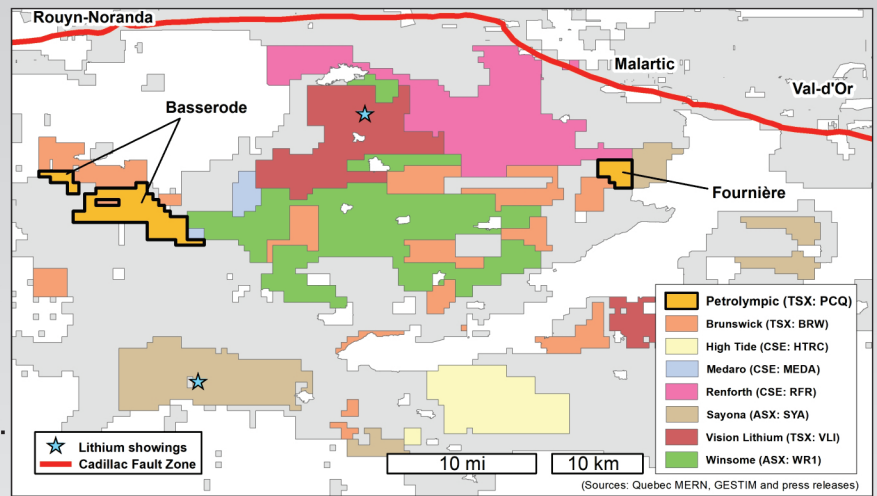
## Lithium Basserode and Fournière

8,532 ha (21,083 acres) within the rapidly emerging Cadillac-Pontiac lithium belt.

The 148 claims cover several clusters of large pegmatite dyke intrusions, highly favourable for the presence of Lithium-Cesium-Tantalum (LCT).

Grab samples previously collected nearby on Vision Lithium property revealed high values of 2.67% and 7.34%  $\text{Li}_2\text{O}$  and significant drillhole intersections of 1.74%  $\text{Li}_2\text{O}$  over 1.90m and 1.00%  $\text{Li}_2\text{O}$  over 6.40m. Channel samples intersected 2.17%  $\text{Li}_2\text{O}$  over 5.50m.

Easily accessible via local gravel and logging roads.



## Lithium Li-1 and Li-2 - James Bay

2,825 ha (6,981 acres) in the Superior Province, within the eastern part of the Opatica Sub-province.

Li-1 (24 claims) is part of the Troilus Belt and is contiguous to the Troilus Lithium Project (Austroid, under option by Liatam Mining), the Troilus Gold property (Sayona) and the Moblan Lithium property (Sayona), the latter having a resource estimate of 12.03 Mt @ 1.4%  $\text{Li}_2\text{O}$  (not 51-101 compliant).

Li-2 (28 claims) is located South of the Whabouchi lithium project, which is expected to be one of the richest lithium spodumene deposits in the world.

Accessible year-round by the Route du Nord.

**ACQUISITION OF STRATEGIC LAND POSITIONS  
DILIGENT EXPLORATION PROGRAMS  
EFFECTIVE COMMUNICATIONS  
POISED FOR GROWTH**

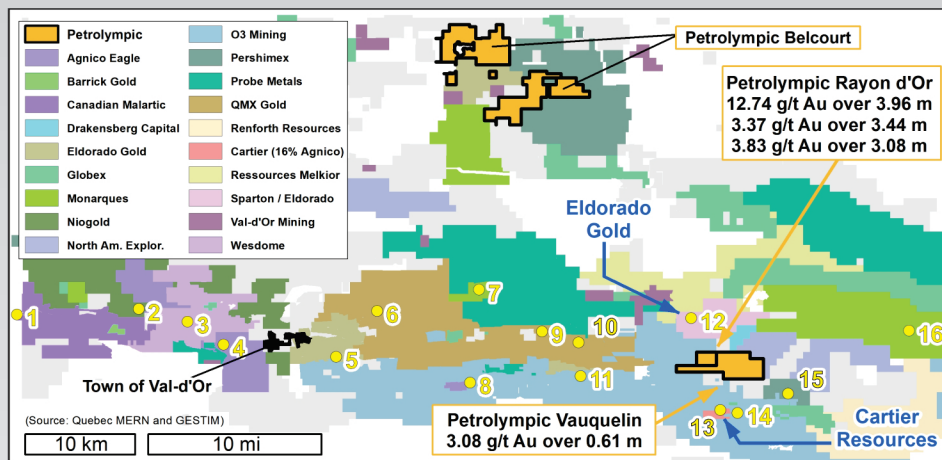
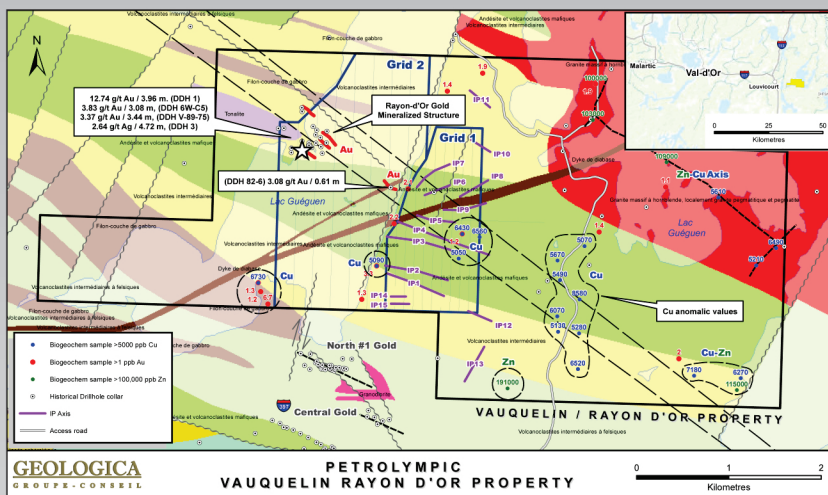
## Gold Rayon d'Or and Vauquelin

2129 ha (5261 acres) within intermediate to mafic volcanic rocks with associated synvolcanic intrusions of the Val d'Or Formation.

37 claims located 40 km East of the town of Val d'Or and surrounded by world-class gold deposits.

**Rayon d'Or Property:**  
Previous drilling has delineated two auriferous zones with most significant intersections of 12.34 g/t Au over 4.0 m and 3.37 g/t Au over 3.44 m.

**Vauquelin Property:**  
Intersections of gold in some boreholes, including a showing with 2.0 g/t Au over 1.8 m. This may be the southeastern extension of the host structure discovered in Rayon d'Or.



- 1- Malartic: Active gold mine
- 2- Marban: 0.37 Moz Au (7.7 MT @ 1.48 g/t) Meas.  
1.22 Moz Au (30.0 MT @ 1.25 g/t) Ind.  
0.20 Moz Au (4.1 MT @ 1.47 g/t) Inf.
- 3- Kiena: 0.7881 Moz Au (2.8282 MT @ 8.67 g/t) Meas.+Ind.  
0.7981 Moz Au (2.9181 MT @ 8.51 g/t) Inf.
- 4- Goldex: Active gold mine
- 5- Lamaque: Active gold mine
- 6- Lac Herbin: Past gold mine (< 2016)
- 7- Beaufor: Gold mine in maintenance
- 8- Akasaba: 0.250 Moz Au (3.70 MT @ 2.16 g/t) Ind.  
0.290 Moz Au (1.80 MT @ 4.92 g/t) Inf.
- 9- Bonnefond: 0.3971 Moz Au (7.418 MT @ 1.67 g/t) Ind.  
0.2908 Moz Au (3.335 MT @ 2.71 g/t) Inf.
- 10- Bevcon: Former gold mine
- 11- Sleepy: 0.280 Moz Au (1.90 MT @ 4.69 g/t) Inf.
- 12- Bruel (Eldorado Gold, TSX-V: ELD)
- 13- Chimo (Cartier Resources, TSX-V: ECR)  
Former gold mine + exploration renewal
- 14- Nordeau: 0.302 Moz Au (0.22 MT @ 4.17 g/t) Meas.+Ind.  
0.146 Moz Au (1.11 MT @ 4.09 g/t) Inf.
- 15- Forsan-Exxeter: 393,869 tons @ 4.91 g/t
- 16- Croinor: 0.0217 Moz Au (0.0801 MT @ 8.44 g/t) Meas.  
0.2143 Moz Au (0.7245 MT @ 9.2 g/t) Ind.  
0.0384 Moz Au (0.1608 MT @ 7.42 g/t) Inf.

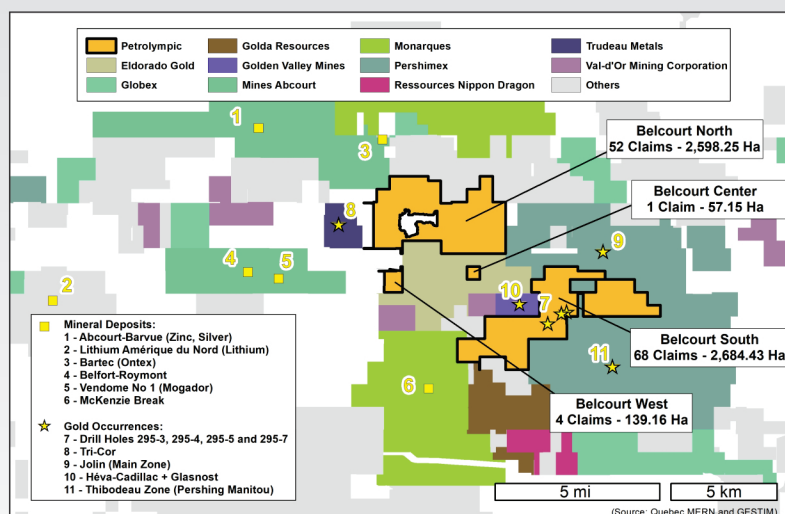
## Gold Belcourt

5,479 ha (13,539 acres) within the Amos-Barraute Volcanic Rock Belt, Abitibi. Easily accessible year-round.

The 125 claims distributed in 4 blocks are located in the midst of several other large mineral properties.

Several promising leads already identified within the Property through IP, soil geochemical and drilling (Petrolympic 2022 campaign – 1,092 m) including:

- 1.49 g/t Au over 5.4 m (including 7.02 g/t Au over 0.9 m)
- 3.13 g/t Au over 3 m (including 7.29 g/t Au over 1 m)
- 0.71 g/t Au over 3 m (including 1.43 g/t Au over 1 m)
- 6.5 g/t Au over 0.5 m
- 2.2 g/t Au over 1.3 m
- 1.3 g/t Au over 2.5 m
- 0.97 g/t Au over 1 m
- 1.3 g/t Au over 2.0 m
- 0.22 g/t Au over 1 m



Contact us for lithium and gold investment opportunities.

info@petrolympic.com  
 82 Richmond Street East, 1st Floor  
 Toronto, Ontario, M5C 1P1

Investors Relations:  
 Andreas Jacob, VP  
 845-542-0613

www.petrolympic.com